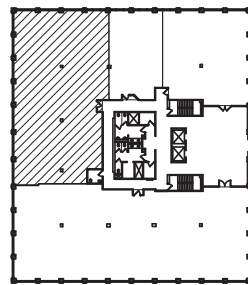


4 X 4 PLANNING MODULE

AVAILABLE SPACE PLAN  
 4,203 USABLE S.F.  
 4,749 RENTABLE S.F.



SUITE LOCATION PLAN



Troy, Michigan



**1111 Long Lake**

1111 W. Long Lake Rd. | Troy, Michigan 48098

**SUITE 104 | First Floor**

- Multiple windowed offices
- Easy access to I-75 freeway
- Covered parking
- Fully sprinklered building
- 4,203 U.S.F. / 4,749 R.S.F.
- Common area factor 13%

