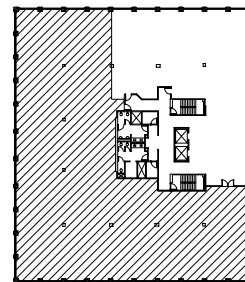


**8 X 8 PLANNING  
MODULE**



**SUITE LOCATION PLAN**

**Troy, Michigan**



**1111 Long Lake**

1111 W. Long Lake Rd. | Troy, Michigan 48098

**SUITE 102 | First Floor**

- Multiple windowed offices
- Easy access to I-75 freeway
- Fully sprinklered building
- 10,524 U.S.F. / 11,892 R.S.F.
- Common area factor 13%

