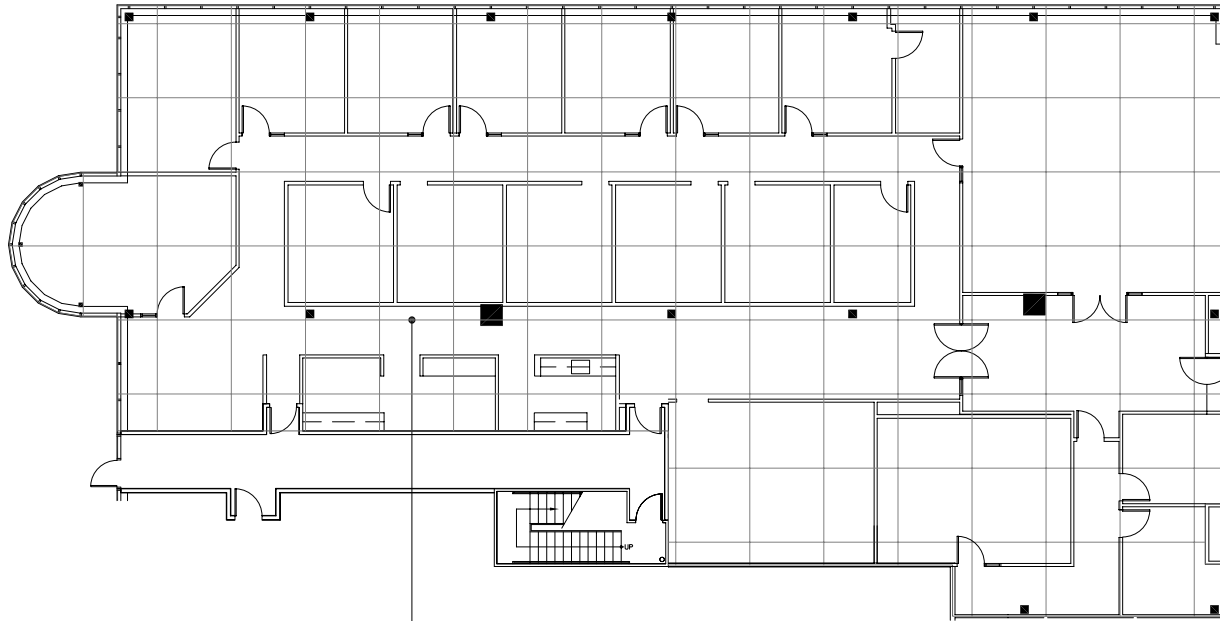
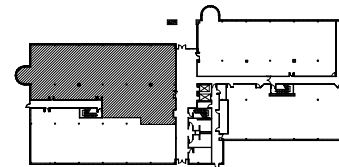


Southfield, Michigan



**8 X 8 PLANNING
MODULE**



SUITE LOCATION PLAN

City Center Office Park - North

26999 Central Park Blvd. | Southfield, Michigan 48076

SUITE 100N | First Floor

- Multiple windowed offices
- Multiple work areas
- Break room with sink
- Direct access to I-696 and Lodge (US 10) freeways
- Covered parking
- Fully sprinklered building
- 6,973 U.S.F. / 7,879 R.S.F.
- Common area factor 13%

