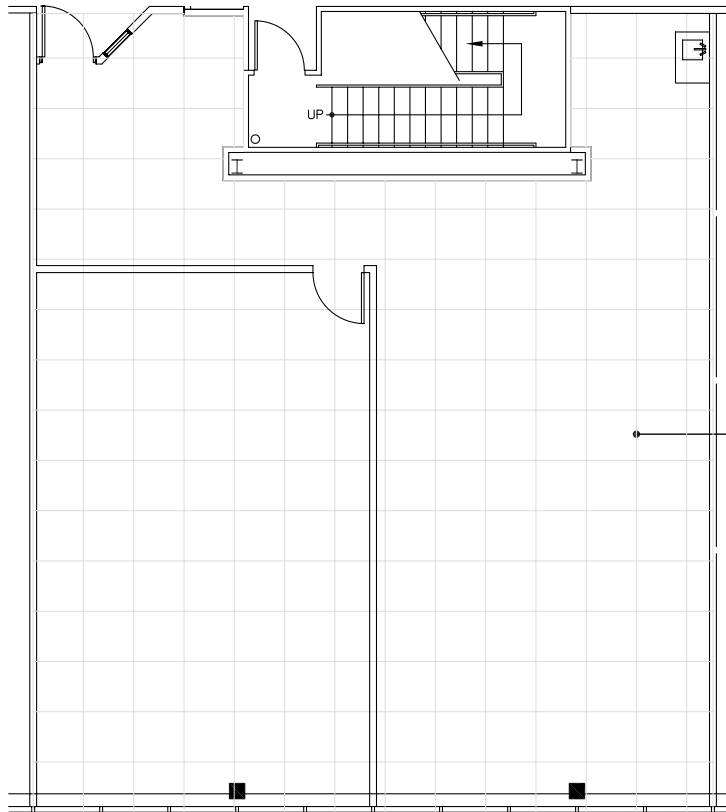
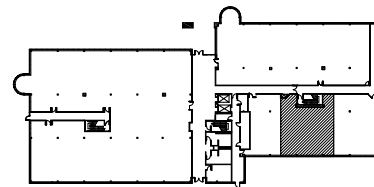


Southfield, Michigan



4 X 4 PLANNING
MODULE



SUITE LOCATION PLAN

City Center Office Park - North

26999 Central Park Blvd. | Southfield, Michigan 48076

SUITE 165N | First Floor

- Exterior glass
- Direct access to I-696 and Lodge (US 10) freeways
- Covered parking
- Fully sprinklered building
- 1,686 U.S.F. / 1,905 R.S.F.
- Common area factor 13%

