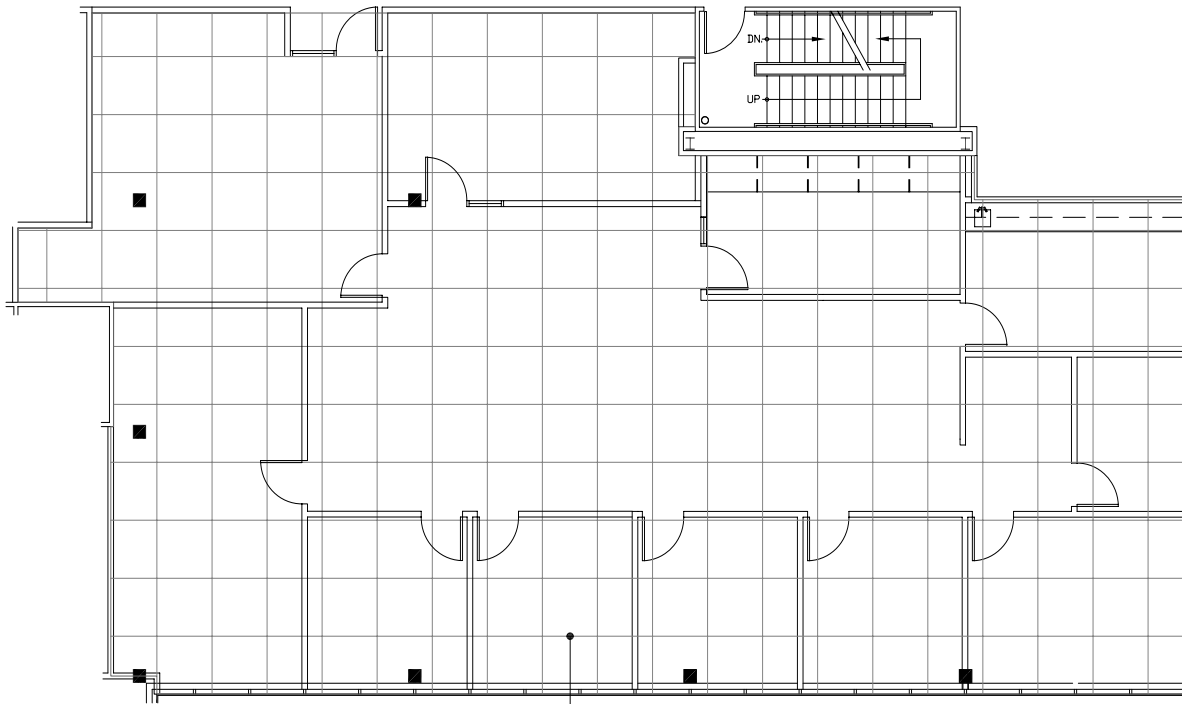
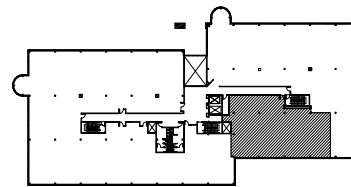


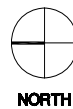
Southfield, Michigan



**4 X 4 PLANNING  
MODULE**



**SUITE LOCATION PLAN**



**NORTH**

### City Center Office Park - North

26999 Central Park Blvd. | Southfield, Michigan 48076

#### **SUITE 225N | Second Floor**

- Multiple windowed offices
- Open work area
- Break room with cabinets
- Direct access to I-696 and Lodge (US 10) freeways
- Covered parking
- Fully sprinklered building
- 3,320 U.S.F. / 3,752 R.S.F.
- Common area factor 13%

