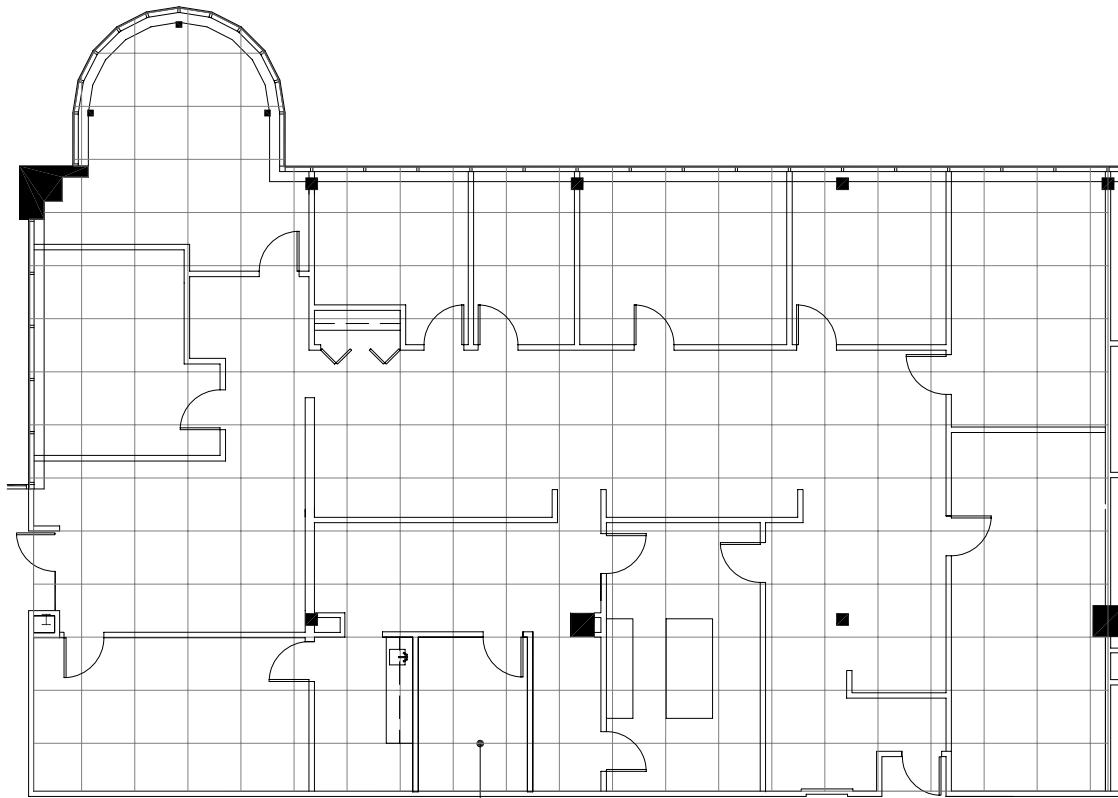
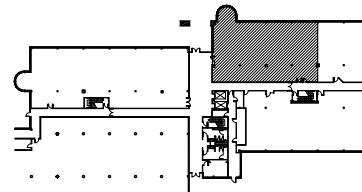


## Southfield, Michigan



**4 X 4 PLANNING  
MODULE**



**NORTH**

**SUITE LOCATION PLAN**

### City Center Office Park - South

26777 Central Park Blvd. | Southfield, Michigan 48076

#### **SUITE 150S | First Floor**

- Multiple windowed offices
- Break room with sink
- Direct access to I-696 and Lodge (US 10) freeways
- Covered parking
- Fully sprinklered building
- 3,966 U.S.F. / 4,482 R.S.F.
- Common area factor 13%

