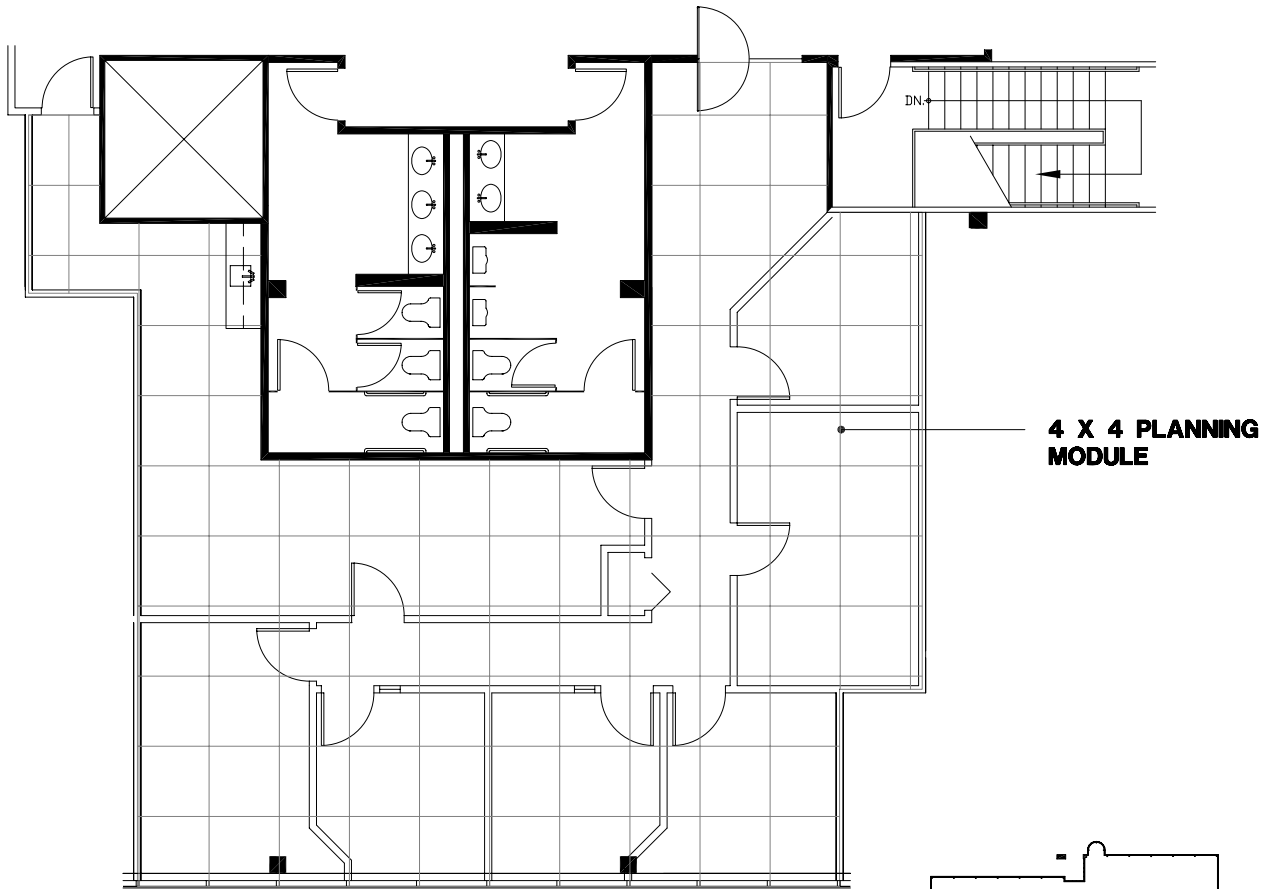
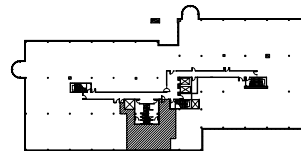


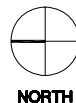
Southfield, Michigan



**4 X 4 PLANNING
MODULE**



SUITE LOCATION PLAN



City Center Office Park - South

26777 Central Park Blvd. | Southfield, Michigan 48076

SUITE 385S | Third Floor

- Multiple windowed offices
- Direct access to I-696 and Lodge (US 10) freeways
- Covered parking
- Fully sprinklered building
- 1,491 U.S.F. / 1,685 R.S.F.
- Common area factor 13%

