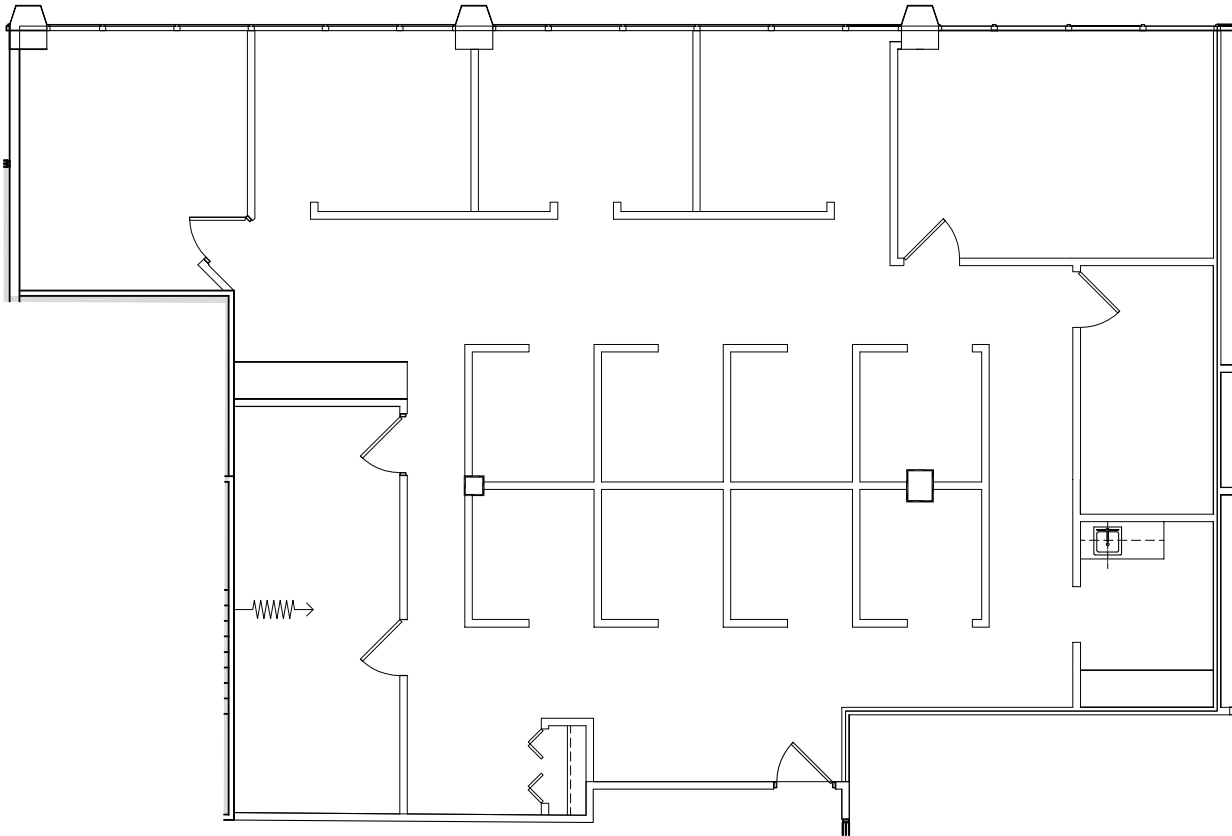


Southfield, Michigan

AVAILABLE SPACE PLAN
2,274 USABLE S.F.
2,570 RENTABLE S.F.



Evergreen Atrium

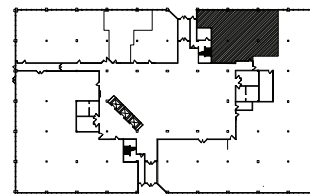
26261 Evergreen Rd. | Southfield, Michigan 48076

SUITE 115 | First Floor

- Windowed offices
- High visibility
- Beautiful 5-story atrium
- Glass line on atrium
- Easy access to I-696 and Lodge (US 10) freeways
- Fully sprinklered building
- 2,274 U.S.F. / 2,570 R.S.F.
- Common area factor 13%



NORTH



SUITE LOCATION PLAN



150 W. 2nd Street • Suite 200 • Royal Oak, MI 48067 • Telephone: 248-358-0800 • etkinllc.com

