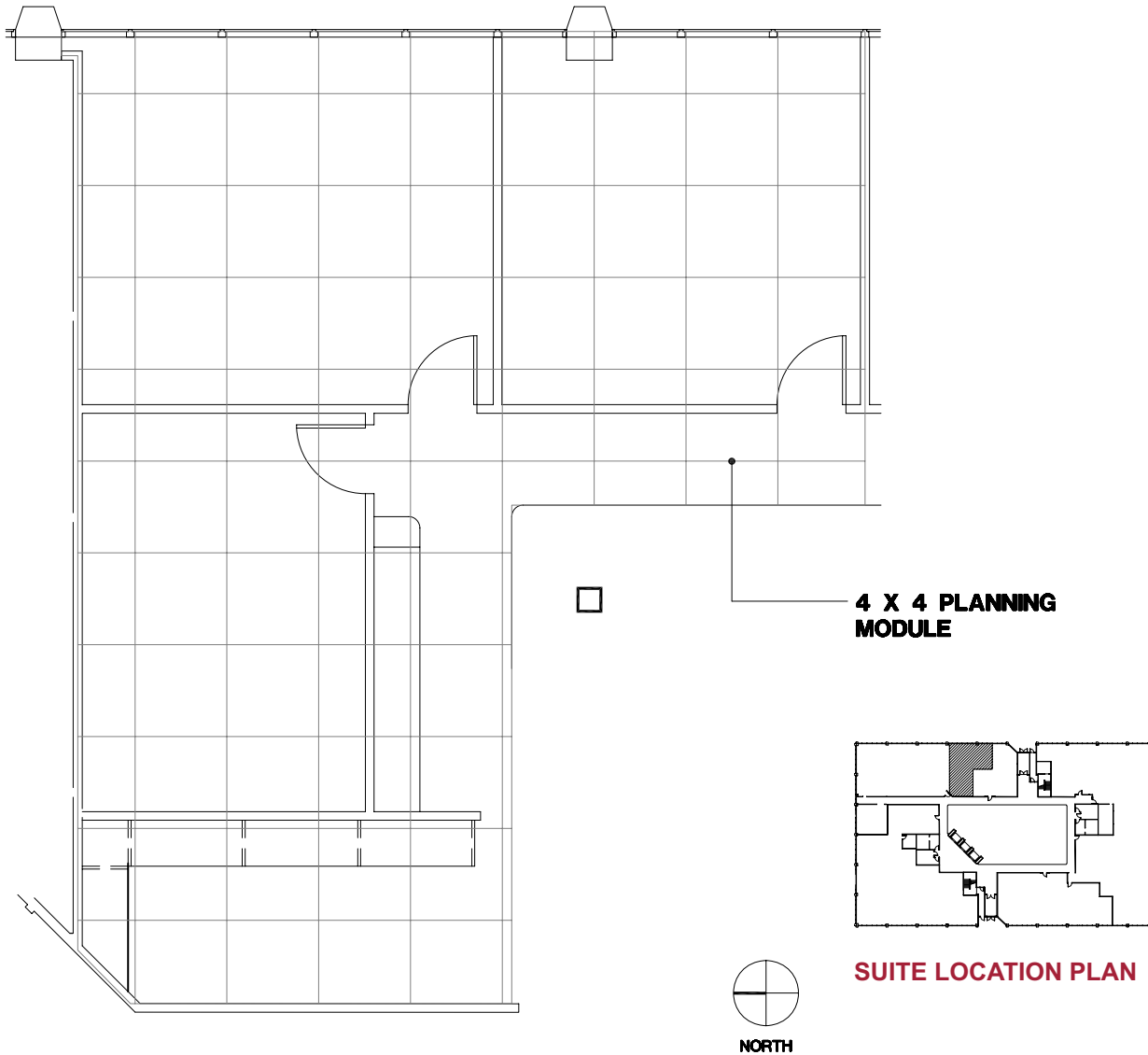


Southfield, Michigan



Evergreen Atrium

26261 Evergreen Rd. | Southfield, Michigan 48076

SUITE 123 | First Floor

- 2 Windowed offices
- Beautiful 5-story atrium
- Easy access to I-696 and Lodge (US 10) freeways
- Fully sprinklered building
- Sundry shop in building
- 1,116 U.S.F. / 1,261 R.S.F.
- Common area factor 13%

