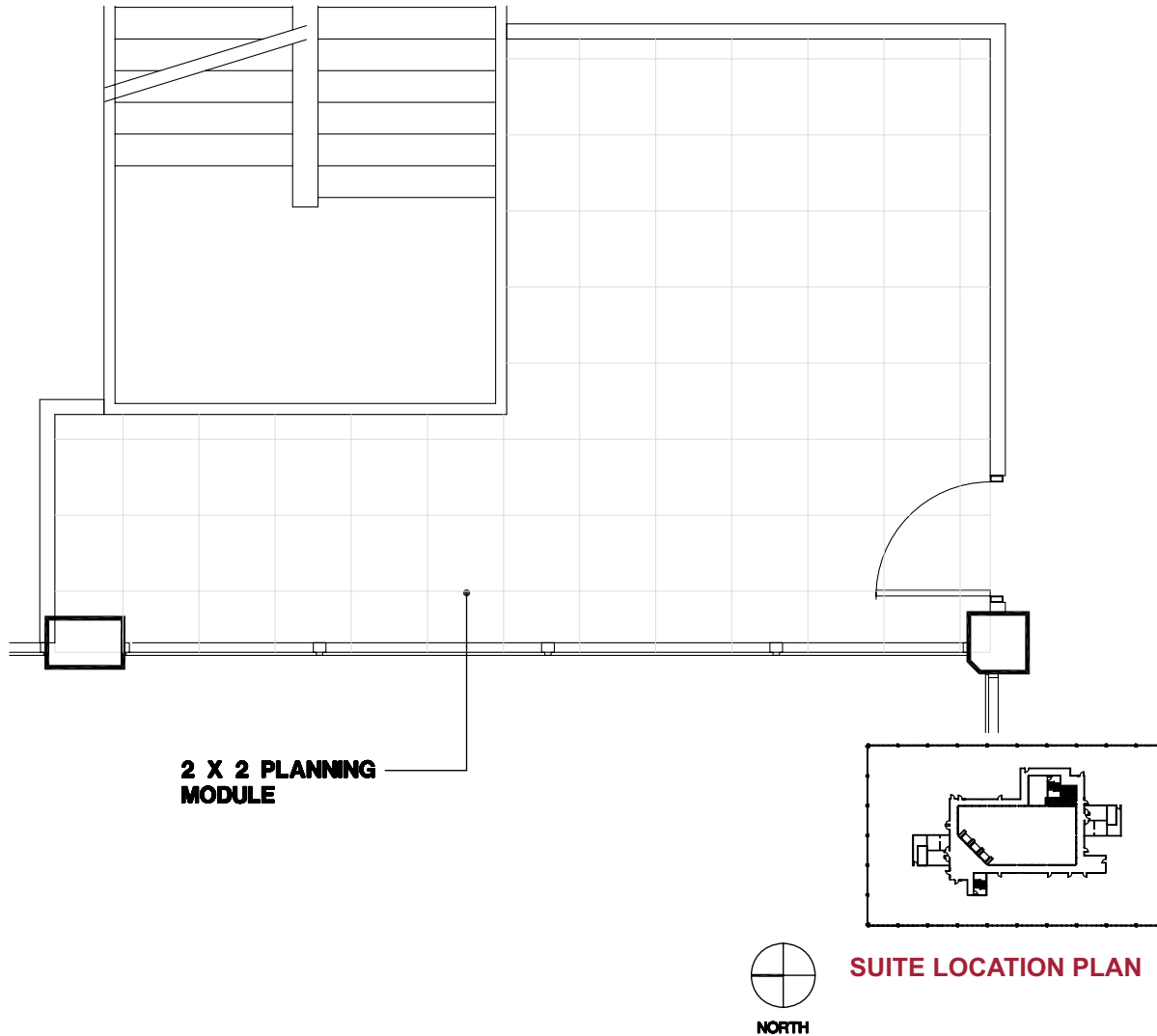


## Southfield, Michigan



### Evergreen Atrium

26261 Evergreen Rd. | Southfield, Michigan 48076

#### SUITE 260 | Second Floor

- High visibility
- Immediate occupancy
- Beautiful 5-story atrium
- Glass line on atrium
- Easy access to I-696 and Lodge (US 10) freeways
- Fully sprinklered building
- 280 U.S.F. / 316 R.S.F.
- Common area factor 13%

