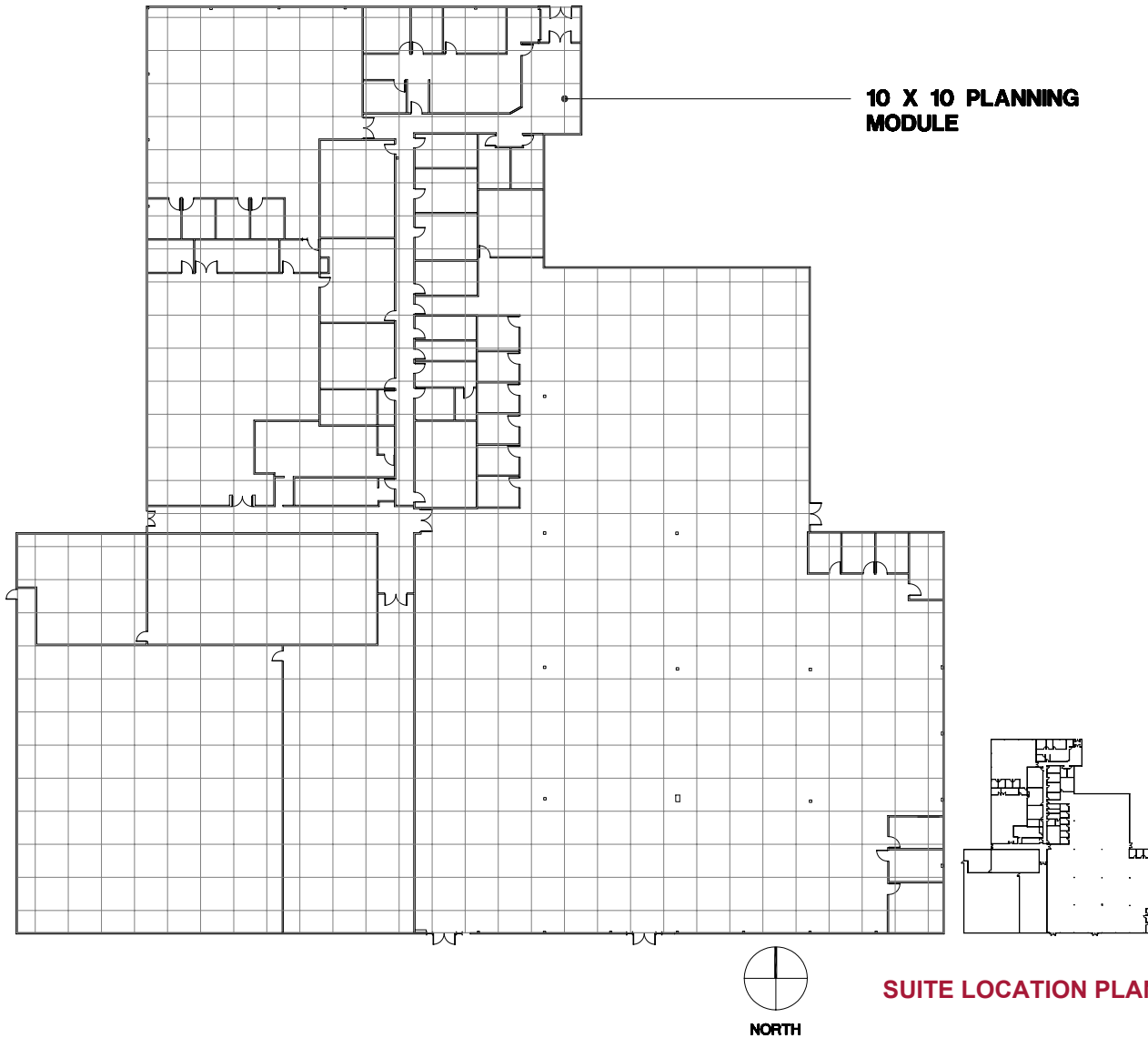


Pontiac, Michigan



2500 Centerpoint

2500 Centerpoint Parkway | Pontiac, Michigan 48341

SUITE 100

- Ideal for office, showroom, research and mock-up
- Large open work area
- Fully sprinklered building
- Easy access to I-75 freeway, M-59, Woodward Ave. and Square Lake Rd.
- 59,654 S.F.



150 W. 2nd Street • Suite 200 • Royal Oak, MI 48067 • Telephone: 248-358-0800 • etkinllc.com

